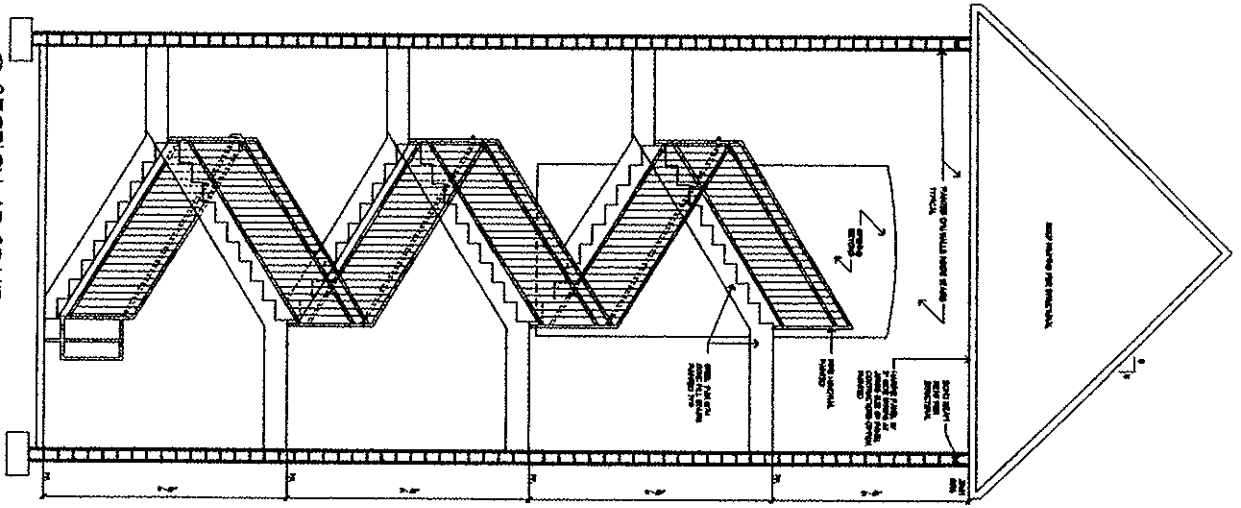
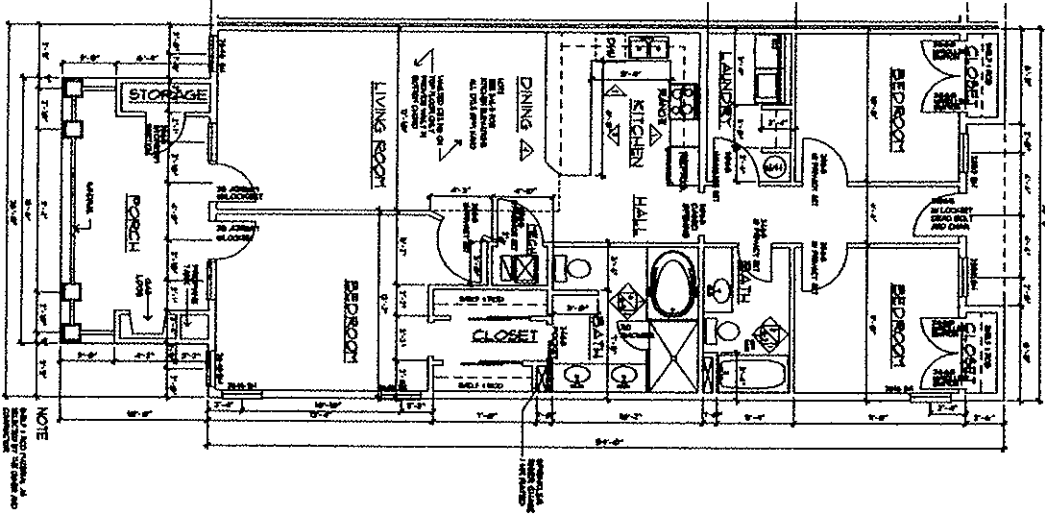


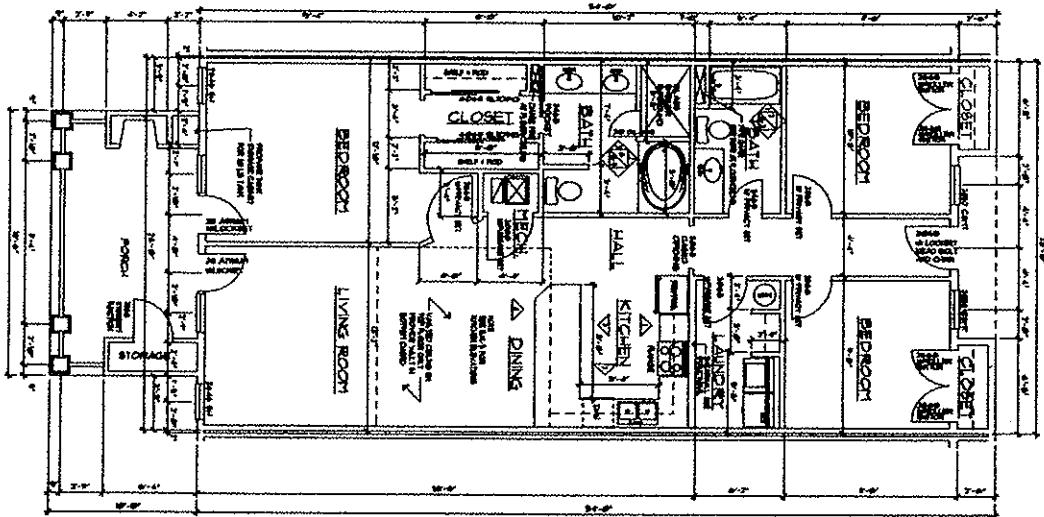
SECTION AT STAIR



TYPICAL END UNIT



TYPICAL INTERIOR UNIT



A-6  
OF 9 SHEETS

REVISIONS  
NO. 1  
DATE: 11/11/00

NEW CONDOMINIUMS FOR  
**SUNSET SHORES**  
LAKE WEISS

**ALAN BELL ARCHITECT INC**  
ARCHITECTURE, ENGINEERING, PLANNING  
ASSOCIATES  
MARK SMITH, DOUGLAS BLAINE  
LORY MOON, LARRY TRANBUE  
211 GORDON STREET    8 EAST FOURTH AVE  
DUNWOODY, GEORGIA    BUCKINGHAM, GEORGIA

